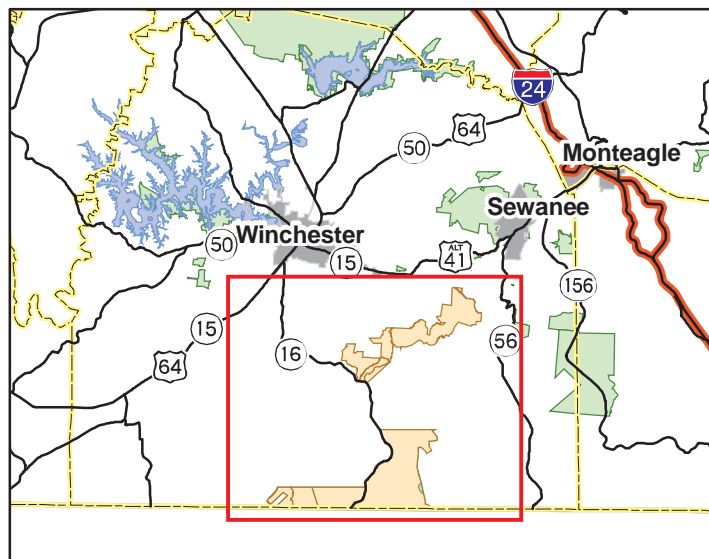
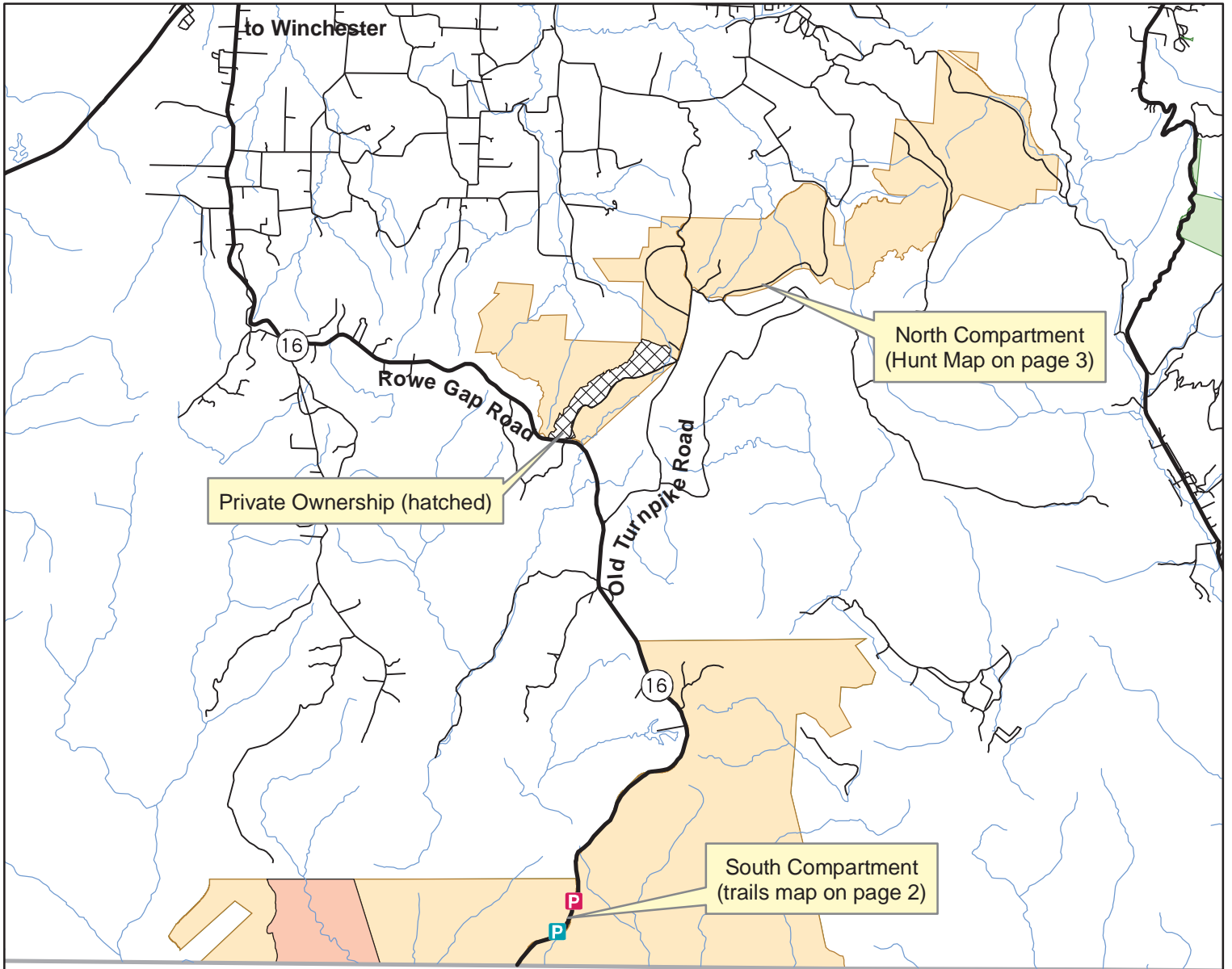




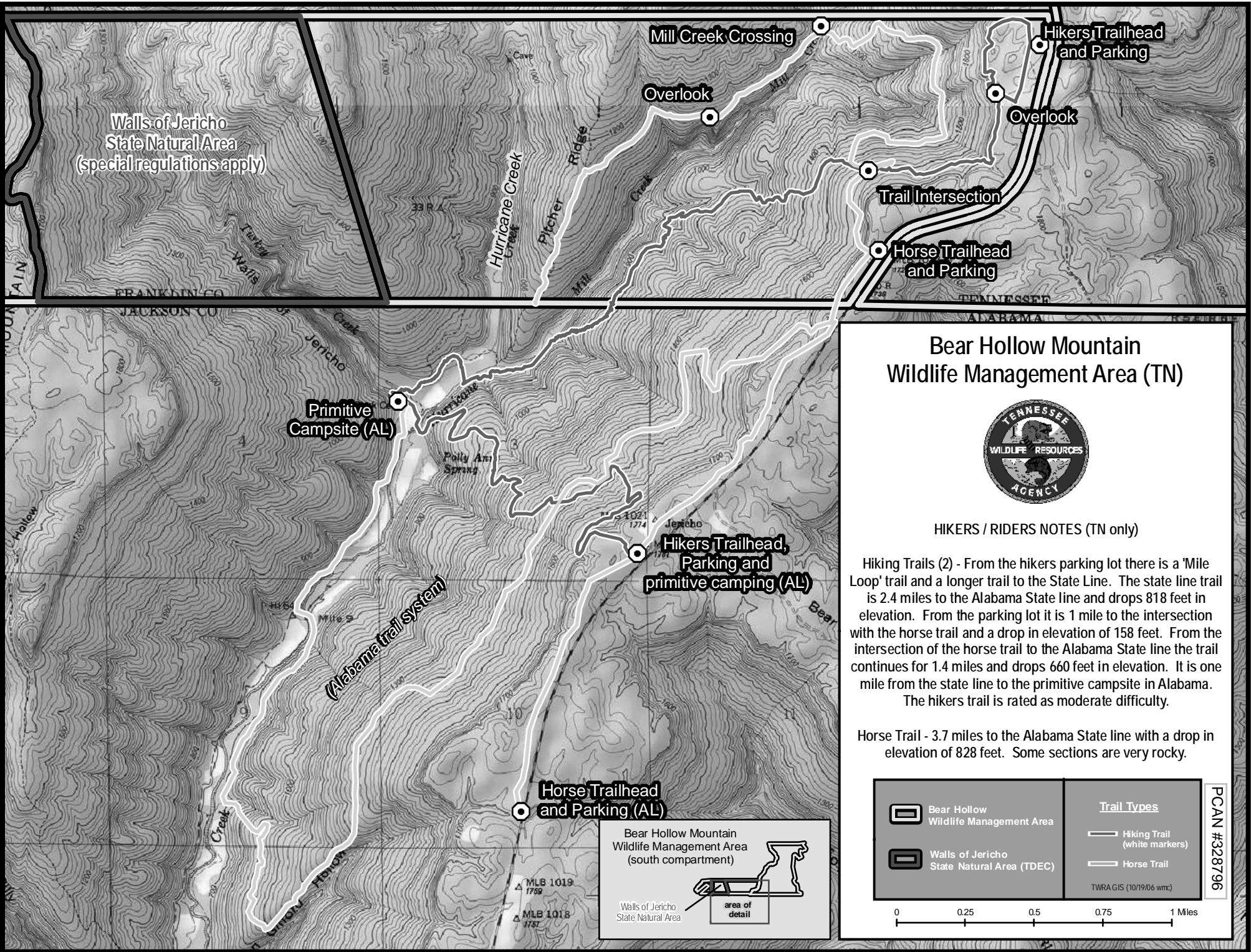
# Bear Hollow Mountain Wildlife Management Area

## North and South Compartments, Franklin County, Tennessee



- WMA
- Walls of Jericho State Natural Area
- Other Management Areas
- Private Ownership

Hiking Trail Parking Horse Trail Parking



## Bear Hollow Mountain Wildlife Management Area (TN)

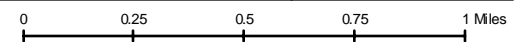


### HIKERS / RIDERS NOTES (TN only)


Hiking Trails (2) - From the hikers parking lot there is a 'Mile Loop' trail and a longer trail to the State Line. The state line trail is 2.4 miles to the Alabama State line and drops 818 feet in elevation. From the parking lot it is 1 mile to the intersection with the horse trail and a drop in elevation of 158 feet. From the intersection of the horse trail to the Alabama State line the trail continues for 1.4 miles and drops 660 feet in elevation. It is one mile from the state line to the primitive campsite in Alabama. The hikers trail is rated as moderate difficulty.

Horse Trail - 3.7 miles to the Alabama State line with a drop in elevation of 828 feet. Some sections are very rocky.

	Bear Hollow Wildlife Management Area	<b>Trail Types</b>
	Walls of Jericho State Natural Area (TDEC)	
		
		TWRA GIS (10/19/06 wmc)



Bear Hollow Mountain Wildlife Management Area (south compartment)



Walls of Jericho State Natural Area

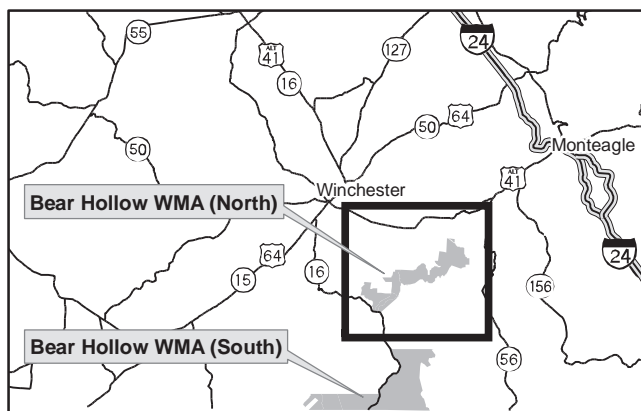
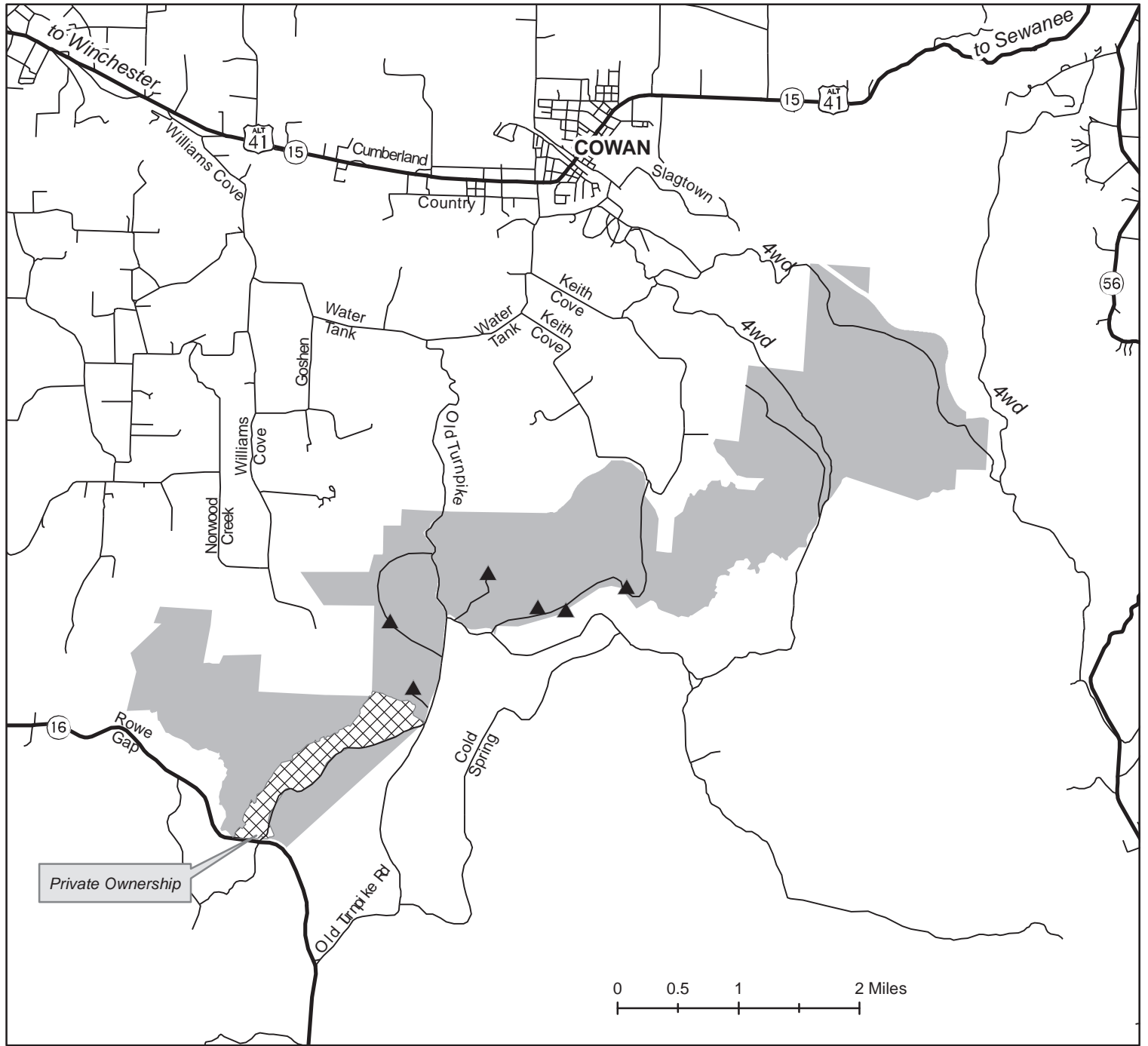
area of detail

MLB 1019 1769  
MLB 1018 1767

PCAN #328796



# Bear Hollow Mountain Wildlife Management Area - North Compartment Hunt Map (old "Compartment One")



- Wildlife Management Area
- Private Property, No Trespassing
- Food Plots

